

RASTGAR

Since 1967



HEAVY DUTY TRUCK-TRAILER AXLE PARTS



RASTGAR ENGINEERING COMPANY



- ◆ Company founded in 1967.
- ◆ Cast & Machined components, produced and delivered at your door step in small, medium & mass series production.
- ◆ All processes are specified and audited by major Japanese and European OEM customers.
- ◆ Exporting to EU and US markets since 1994.

OUR COMPETENCIES

- ◆ Design
- ◆ Finite Element Analysis
- ◆ Tooling
- ◆ Machining
- ◆ Casting
- ◆ Prototyping
- ◆ Pilot Lots
- ◆ Series Production
- ◆ Worldwide Shipping
- ◆ End to End Logistics

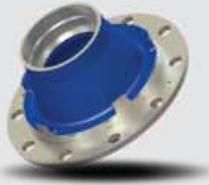


RASTGAR
Since 1967





TRUCK & TRAILER WHEEL HUBS AND BRACKETS



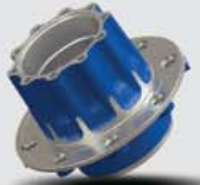
Ductile Iron
Weight 25 Kg
EN-GJS-400-15



Ductile Iron
Weight 35 Kg
EN-GJS-500-7



Ductile Iron
Weight 23 Kg
EN-GJS-450-10



Ductile Iron
Weight 24 Kg
EN-GJS-500-7



Ductile Iron
Weight 25 Kg
EN-GJS-450-10



Ductile Iron
Weight 27.5 Kg
EN-GJS-450-10



Ductile Iron
Weight 18 Kg
EN-GJS-450-10



Ductile Iron
Weight 32 Kg
EN-GJS-450-10



Ductile Iron
Weight 29.50 Kg
EN-GJS-600-3



Ductile Iron
Weight 4.52 Kg
EN-JS-500-7



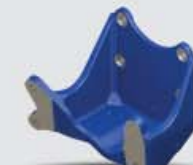
Ductile Iron
Weight 3.70 Kg
EN-JS-450-10



Ductile Iron
Weight 3.96 Kg
EN-JS-500-7



Ductile Iron
Weight 3.12 Kg
EN-JS-450-10

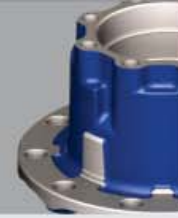


Ductile Iron
Weight 14.5 Kg
EN-GJS-500-7

RASTGAR

Since 1967

MANUFACTURING

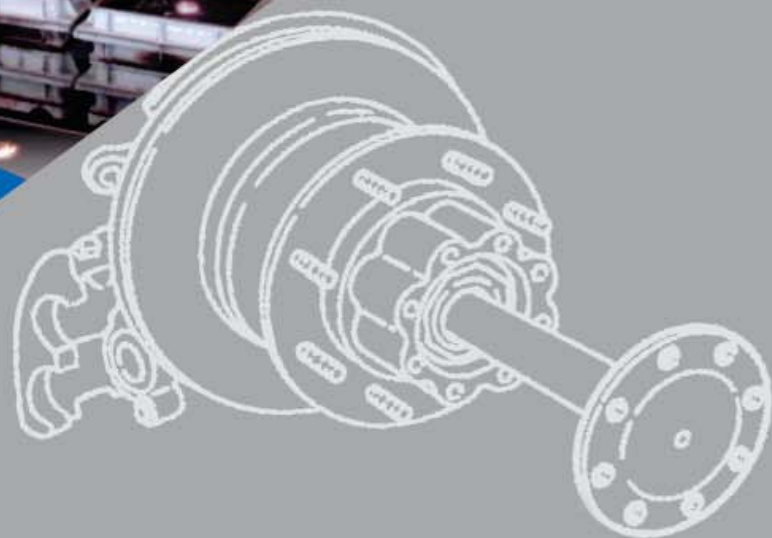


FOUNDRY

- ◆ Metal Cast:
 - a. Ductile Iron (Grade EN-GJS 400-15~EN-GJS 600-3)
 - b. Cast Iron (EN-GJL 200~EN-GJL 250)
- ◆ Moulding Systems:
 - a. High Pressure Moulding Line from (HWS) Heinrich Wagner Sinto (650 x 550 x 250)/2 Siemens S7.
 - b. Chemically Bonded Sand
- ◆ Casting weight: 5Kg - 45Kg
- ◆ Melting Capacity: 9,000 Tons/Year; Industherm - Power Track
- ◆ Casting Simulation / Optimization
- ◆ Design + CAD + CAM
- ◆ Eirich Sand System
- ◆ Core Shop (Fordath, Roperwerk, Vogel & Schemmann)
- ◆ Shot-blast and Tumb-blast machines; Wheelabrator
- ◆ Pattern Shop: Foundry Tooling Production



RASTGAR
Since 1967





MANUFACTURING

MACHINING

- ◆ Design, FEA
- ◆ Dedicated Tool Room with CAD/CAM for developing tooling, fixtures, gauges for new parts.
- ◆ CNC Horizontal Machining Centers (1000mm x 800mm x 850mm x 0.001 Rotary Table)
- ◆ CNC Vertical Lathe Machines (Maximum Turning Dia 630mm)
- ◆ CNC Machining Centers with Multiple Pallets (560mm x 430mm x 570mm)
- ◆ Grinding Machines



RASTGAR

Since 1967



MANUFACTURING

MACHINING

- ◆ Design, FEA
- ◆ Dedicated Tool Room with CAD/CAM for developing tooling, fixtures, gauges for new parts.
- ◆ CNC Horizontal Machining Centers (1000mm x 800mm x 850mm x 0.001 Rotary Table)
- ◆ CNC Vertical Lathe Machines (Maximum Turning Dia 630mm)
- ◆ CNC Machining Centers with Multiple Pallets (560mm x 430mm x 570mm)
- ◆ Grinding Machines



RASTGAR

Since 1967



TEST EQUIPMENT

- ◆ Optical Emission Spectrometer (17 Channel)
- ◆ CMM (Coordinate Measuring Machine) (700mm x 700mm x 600mm)
- ◆ CE Meter Analysis
- ◆ Metallurgical Analysis
- ◆ Image Analyzer for metal phase analysis
- ◆ Ultrasonic Nodularity Tester
- ◆ Sand Permeability and Mould Hardness testing equipment
- ◆ Universal Testing Machine (UTS) for Standard Test Bar
- ◆ Universal Testing Machine (UTS) for Cross Sectional Sample from Component
- ◆ Surface Roughness Tester
- ◆ Coating Surface Tester
- ◆ Profile Projector
- ◆ Burst Test Machine
- ◆ Impact Testing at subzero temperature in Cryogenic Chamber (-30° C)
- ◆ Ultrasonic Flaw Detector



Cryogenic Impact Testing



Universal Testing Machine



Image Analyzer

Coordinate Measuring Machine



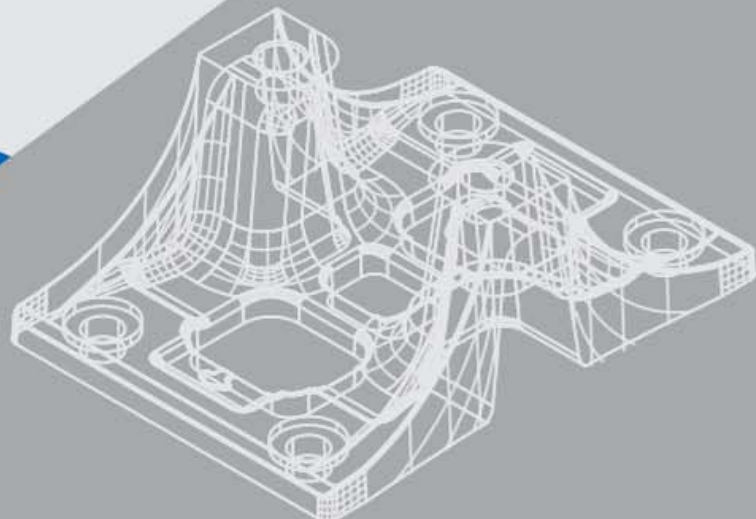
Spectrometer

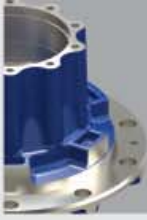


Ultrasonic Flaw Detector



Profile Projector





AFFILIATIONS

CERTIFICATIONS



ISO 9001: Quality Management System



ISO / TS 16949: Development and Manufacturing of Automobile Parts



OHSAS 18001: Occupational Health & Safety Management System

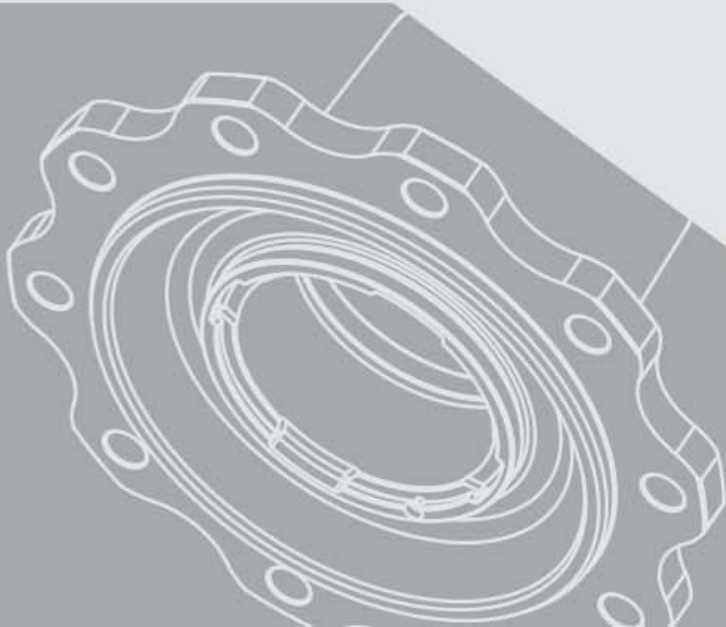


ISO 14001: Environmental Management System

MEMBERSHIPS



- | | |
|---|--|
| - German Foundry Association | - Pakistan Institute of Quality and Productivity |
| - ICME (Institute of Cast Metals Engineers) | - Member Employers Federation of Pakistan |
| - AMA (American Management Association) | - PFA (Pakistan Foundry Association) |
| - PIM (Pakistan Institute of Management) | - Islamabad Chamber of Commerce and Industry |



RASTGAR

Since 1967

Worldwide Export



Rastgar Engineering Company (Pvt) Ltd.

307, Street # 3, Industrial Area, I-9/3
Islamabad, 44790
Pakistan.

Local Access: 051 4433 544

International Access: +92 51 4433 545

Fax: +92 51 4433 548

General Enquiries: info@rastgar.com

Sales Department: sales@rastgar.com



www.rastgar.com